

"Your Strapping Expert With Proven Quality and Certified Products..."



POLYESTER CORDED STRAPPING

Excellent Break Strength

LIFEX® is produced 100% with high tenacity industrial polyester cords and it is highly reliable in any kind of securing, baling and palletizing application.

Safe to Use

LIFEX® does not cause any risk of damage during tensioning and injury while removing the strapping because it is made 100% out of polyester.

Delicate Packaging

LIFEX® ensures no damage on the surface or at the corners of delicate products. It prevents scratches, does not corrode and stain.

Elongation and Elastic Memory

Elongation and elastic memory features of polyester cords allow LIFEX® to be tensioned perfectly on any type of surface. LIFEX® absorbs the impact forces which may occur during transportation and ensures the integrity of packages without breaking at all times.

Manual Applications

LIFEX® is a light and practical product. It can be applied and removed by hand in complete safety without extra precautions.

Endurance to Severe Weather Conditions

LIFEX® maintains its shape and tension completely under rigorous weather conditions. It is resistant to high temperature, ultraviolet rays and moisture.

Application with Low-Cost Hand Tools

Compared to other plastic straps, LIFEX® can be applied with simple, light and trouble-free hand tools, which are very sturdy and economical.

LIFEX® Product line is used for palletizing, unitizing, bundling

- Competitive alternative against steel or other strapping and packaging options.
- Competitive alternative against woven strapping for securing complete loads in containers, etc.
- Competitive alternative for one-way cargo securing system (eg. steel, ratchet or heavy steel wire)

The advantages of corded polyester in relation to steel banding:

- LIFEX® Polyester corded strap is as strong as steel strap, suitable for medium and heavy loads.
- LIFEX® Polyester corded strap is very user friendly, safe and has a natural elasticity.
- LIFEX® Polyester corded strap has a natural shock absorption (eg. dynamic load).
- LIFEX® can be disposed easily without creating large volume of scrap.





TECHNICAL SPECIFICATIONS



LIFEX® Textile Strapping

The polyester is bonded together with hot melt. This type of strapping is mainly used for outdoor applications (like wood industry) and also for load securing. Hot melt strapping is waterproof and recommended for temperatures up to 60°C.



LIFEX® Composite Strapping

The polyester is co-extruded with plastic and shows excellent properties. Surface coating avoids damage against rubbing. Composite strapping is UV proof, waterproof and recommended for temperatures up to 80°C.

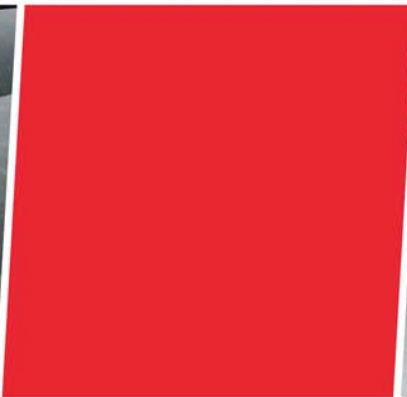
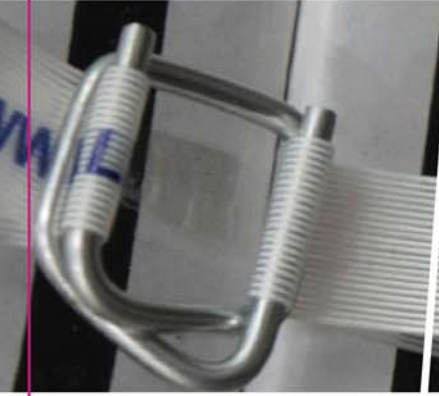
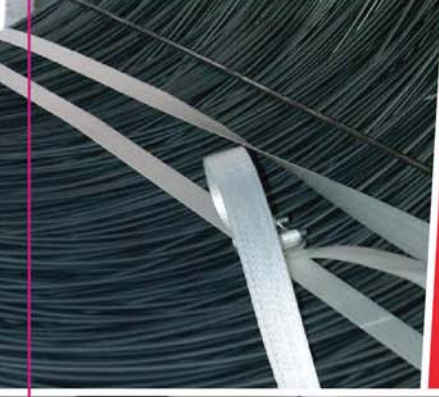
	CODE	WIDTH	BREAK STRENGTH	COIL LENGTH
FIBER BALING	BL - 9	9 mm	210 kg	1.800 m
	BL - 13	13 mm	300 kg	1.500 m
	BL - 16	16 mm	365 kg	1.200 m
	BL - 19	19 mm	400 kg	600 m
BALING	BLN - 8	8 mm	230 kg	500 m
	BLN - 9	9 mm	275 kg	500 m
	BLN - 11	11 mm	340 kg	500 m
	BLN - 13	13 mm	390 kg	500 m
	BLN - 16	16 mm	470 kg	340 m
LIGHT DUTY	LD - 9	9 mm	225 kg	1.800 m
	LD - 13	13 mm	325 kg	1.500 m
	LD - 16	16 mm	400 kg	1.200 m
	LD - 19	19 mm	500 kg	600 m
MEDIUM DUTY	MD - 9	9 mm	275 kg	1.500 m
	MD - 13	13 mm	390 kg	1.100 m
	MD - 16	16 mm	470 kg	850 m
	MD - 19	19 mm	570 kg	600 m
HEAVY DUTY	HD - 13	13 mm	550 kg	850 m
	HD - 16	16 mm	620 kg	600 m
	HD - 19	19 mm	750 kg	500 m
	HD - 25	25 mm	1000 kg	500 m
	HD - 30	30 mm	1200 kg	150 m
	HD - 35	35 mm	1350 kg	150 m
SUPER HEAVY DUTY	SHD - 19	19 mm	980 kg	400 m
	SHD - 25	25 mm	1250 kg	400 m
	SHD - 38	38 mm	2000 kg	100 m

	CODE	WIDTH	BREAK STRENGTH	COIL LENGTH
LIGHT DUTY	CLD - 13	13 mm	230 kg	1.500 m
	CLD - 16	16 mm	300 kg	1.200 m
	CLD - 19	19 mm	325 kg	700 m
MEDIUM DUTY	CMD - 13	13 mm	330 kg	1.100 m
	CMD - 16	16 mm	450 kg	850 m
	CMD - 19	19 mm	500 kg	700 m
HEAVY DUTY	CHD - 16	16 mm	530 kg	750 m
	CHD - 19	19 mm	600 kg	650 m
	CHD - 25	25 mm	825 kg	500 m
	CHD - 34	34 mm	1500 kg	400 m
SUPER HEAVY DUTY	CSHD - 25	25 mm	1000 kg	500 m
	CSHD - 26	36 mm	1350 kg	300 m
	CSHD - 32	32 mm	1650 kg	300 m

Accessories



"Your Strapping Expert With Proven Quality and Certified Products..."



www.lifexstrap.com

Factory :

Dilovası Organize Sanayi Bölgesi
5. Kısım D-5009 Sk. No.1

Dilovası 41455 Kocaeli / TURKEY

Tel. : +90 (262) 648 98 00

Fax : +90 (262) 648 98 98

Office :

Barbaros Mh. Mor Sümbül Sk. Varyap Meridian
Business I / Blok Kat : 4 No: 52

Batı Ataşehir 34758 İstanbul / TÜRKİYE

Tel. : +90 (216) 504 10 08 - 09

E-mail : sales@mpsmetal.com.tr